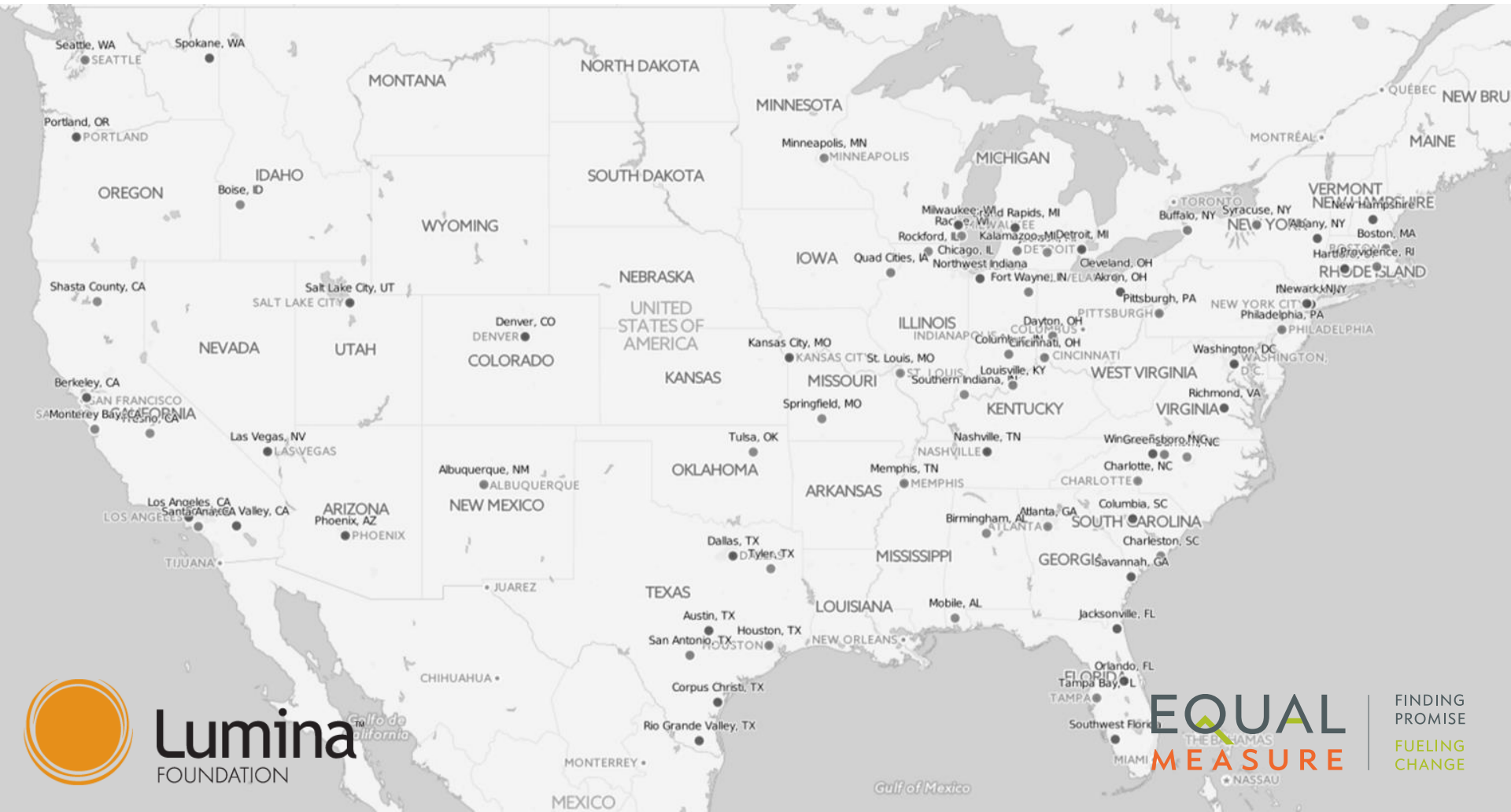


Lumina Foundation's Community Partnership for Attainment



CPA Overview



75 U.S. Cities | 3 Cohorts



Catalytic Funding

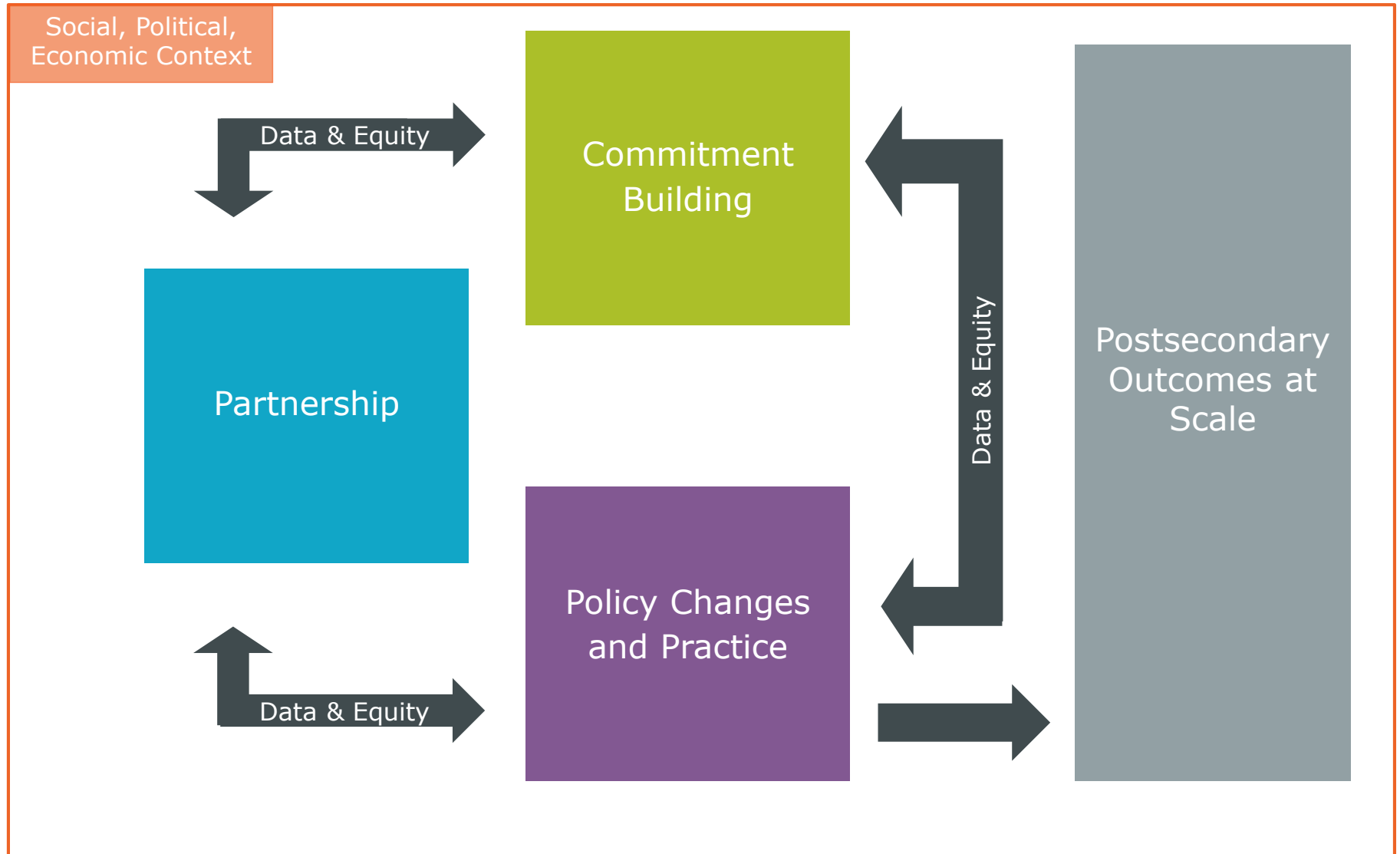


Robust Technical Support



Evaluation Overview

Evaluation Framework



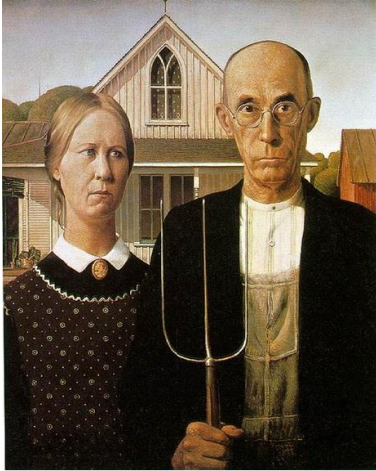
Broad Approach across 75 communities:

- Site lead interviews
- Document analysis of charters and site materials
- “Deeper” interaction through site visits
- Policy & Practice questionnaire



Partnership

3 Types of Partnerships



Long-standing partnerships focused on postsecondary success

Established partnerships “stretching” into the post-secondary side of the cradle-to-career continuum



Emerging partnerships focused on postsecondary success

Partners spent time and effort early on establishing the structures to help move the work forward

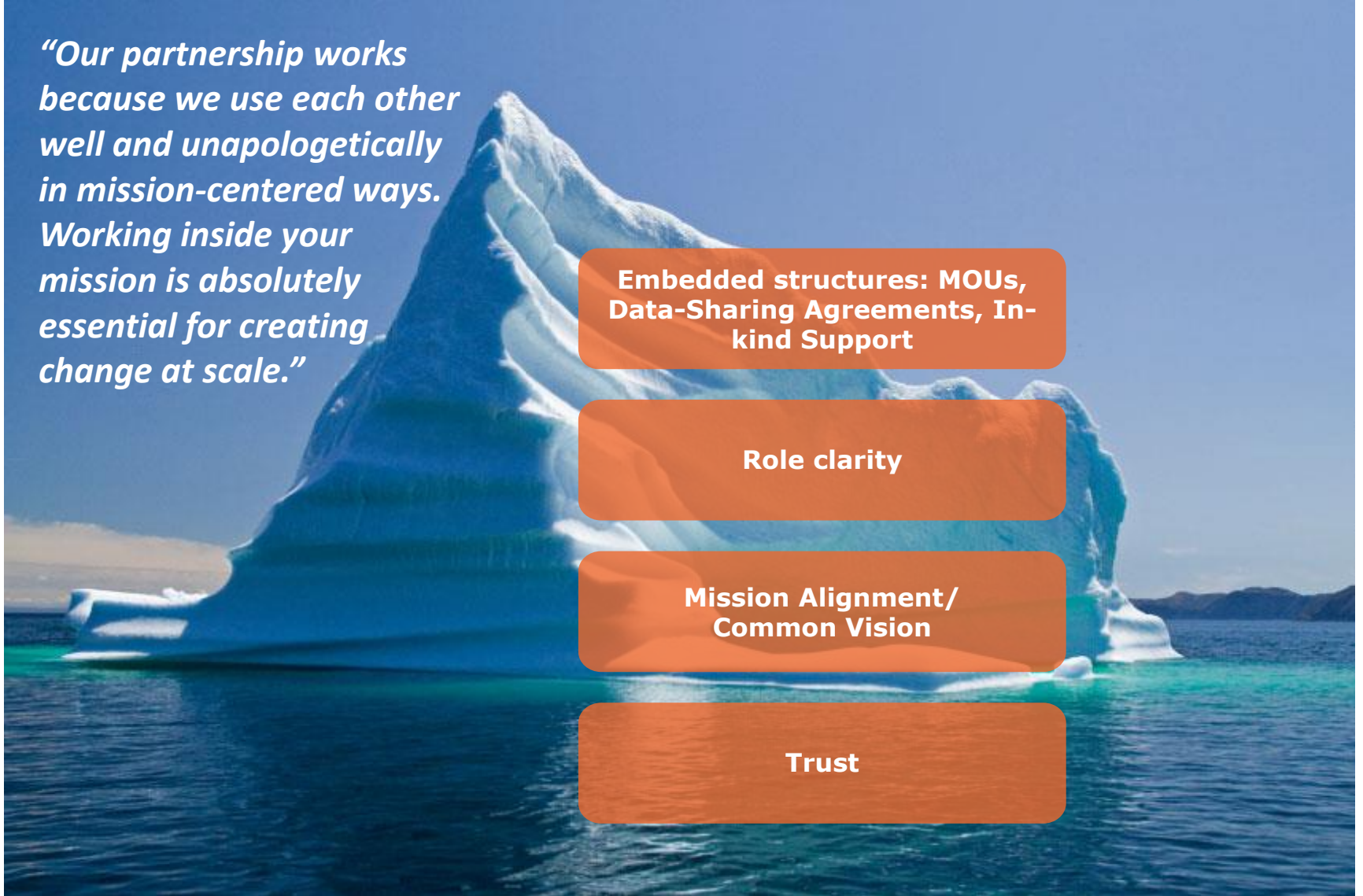
“Our partnership works because we use each other well and unapologetically in mission-centered ways. Working inside your mission is absolutely essential for creating change at scale.”

Embedded structures: MOUs, Data-Sharing Agreements, In-kind Support

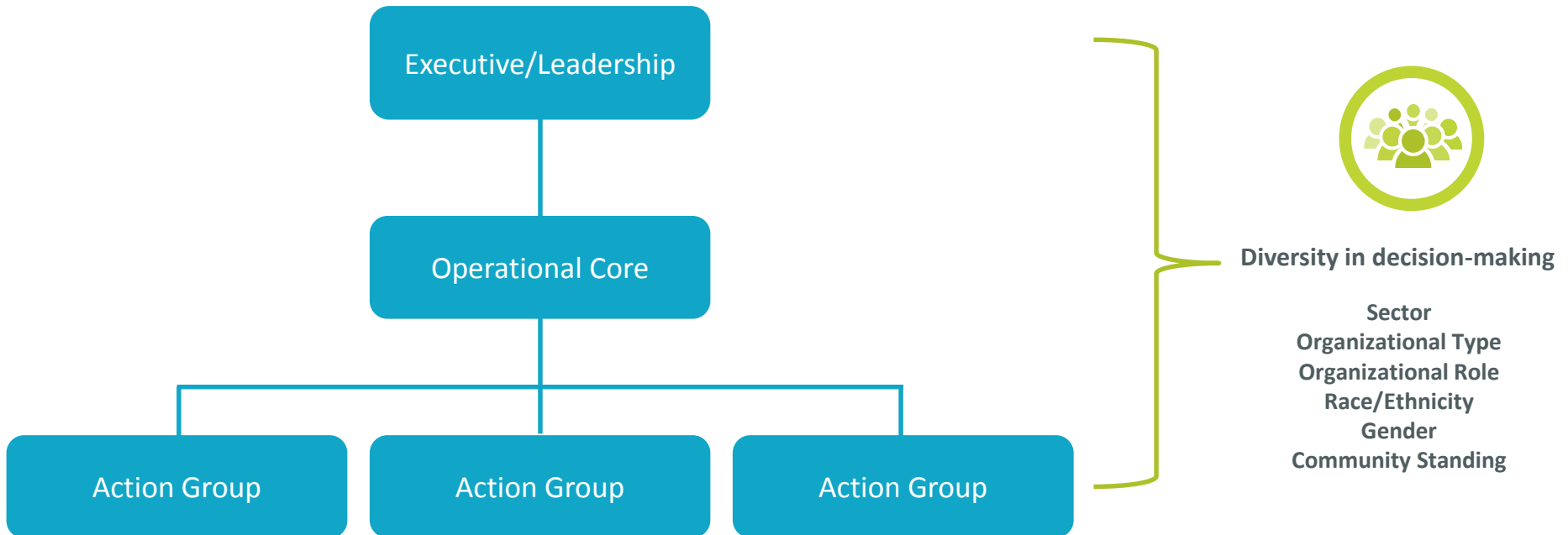
Role clarity

**Mission Alignment/
Common Vision**

Trust



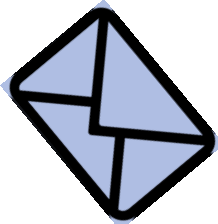
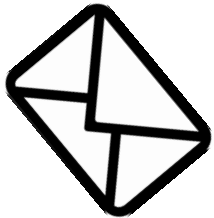
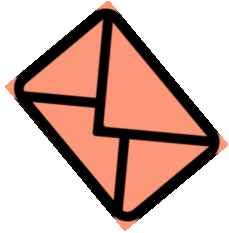
Ensure diversity of partnership members and decision-making



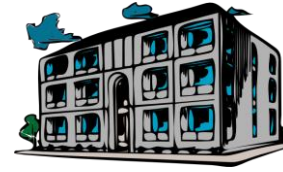
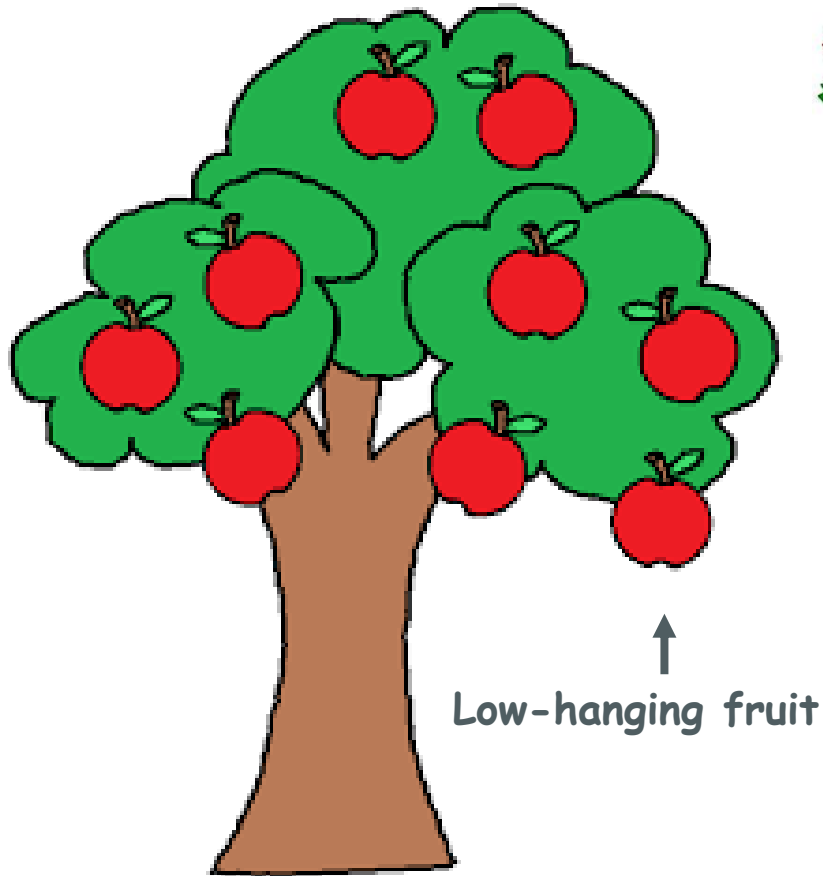


Commitment Building

Align the message, the messenger, and the audience



Leverage strong relationships to build connections and expand networks



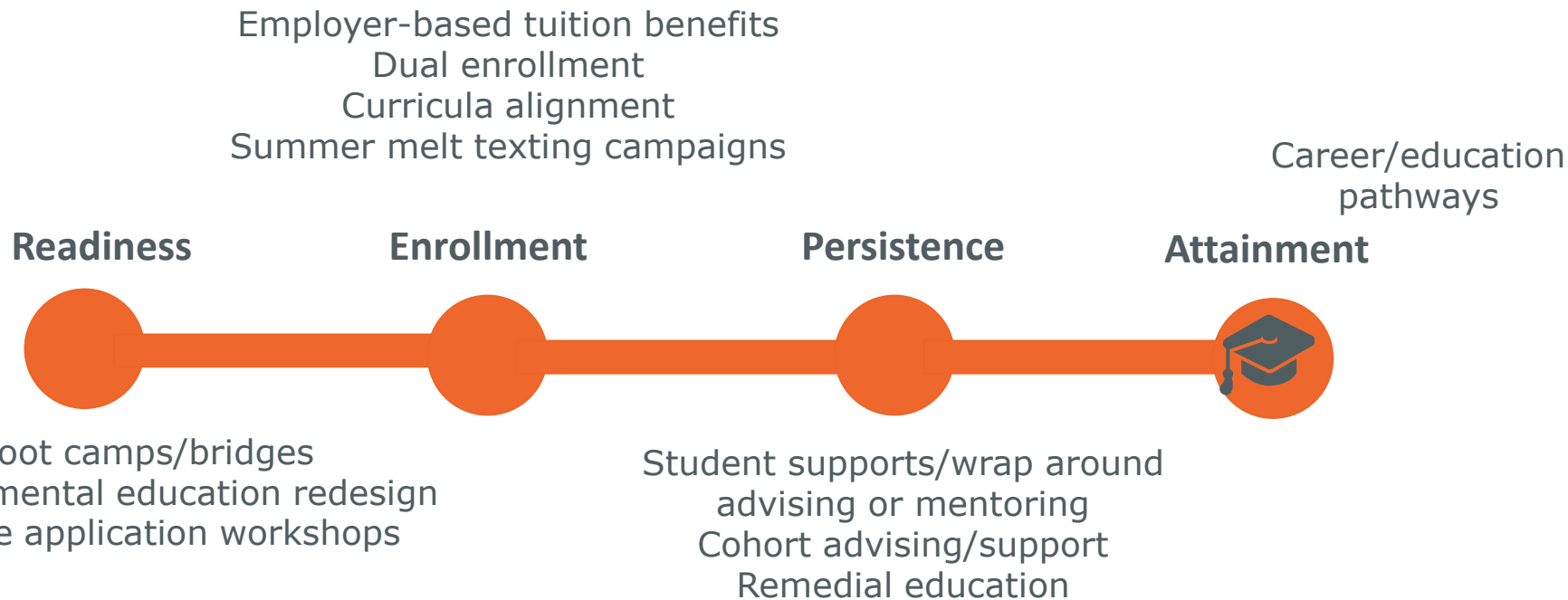


Policy and Practice

Where would you say your partnership is spending the most time/effort working in?

- 1) Readiness
- 2) Enrollment
- 3) Persistence
- 4) Attainment

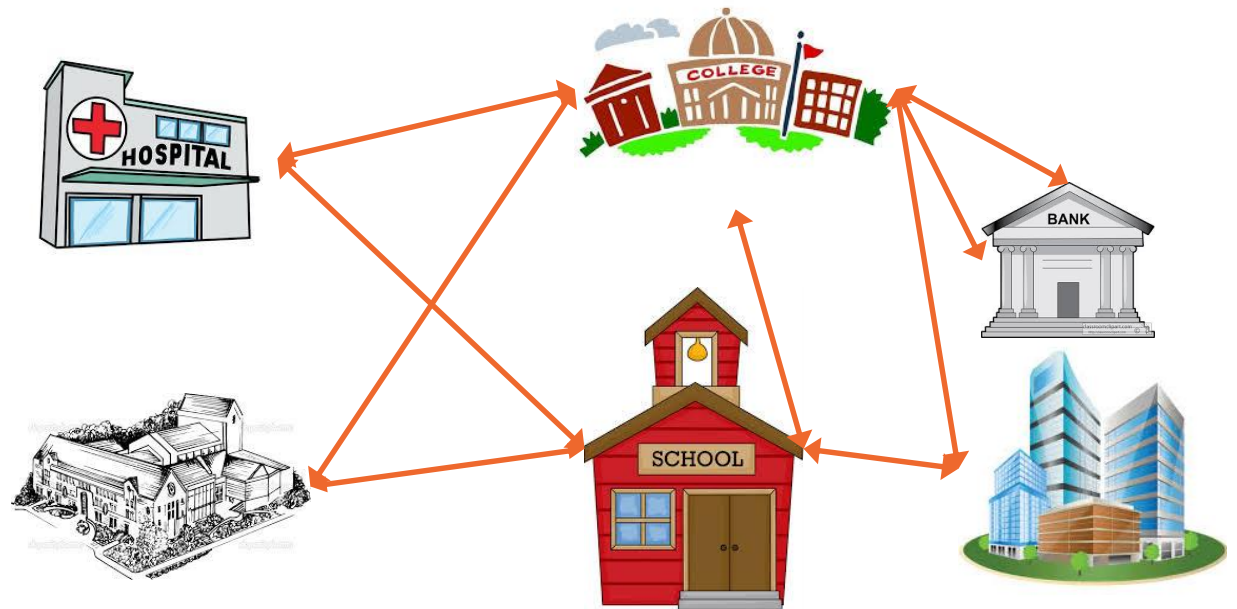
Emphasis on readiness, enrollment, and a connection to career/workforce development



Policy and Practice

Partnerships:

- Higher ed-K-12
- Higher ed-CBO
- K-12-CBO
- Higher ed-Business
- K-12-Business





Data

Webinar Survey

In which of the following ways do you use data?

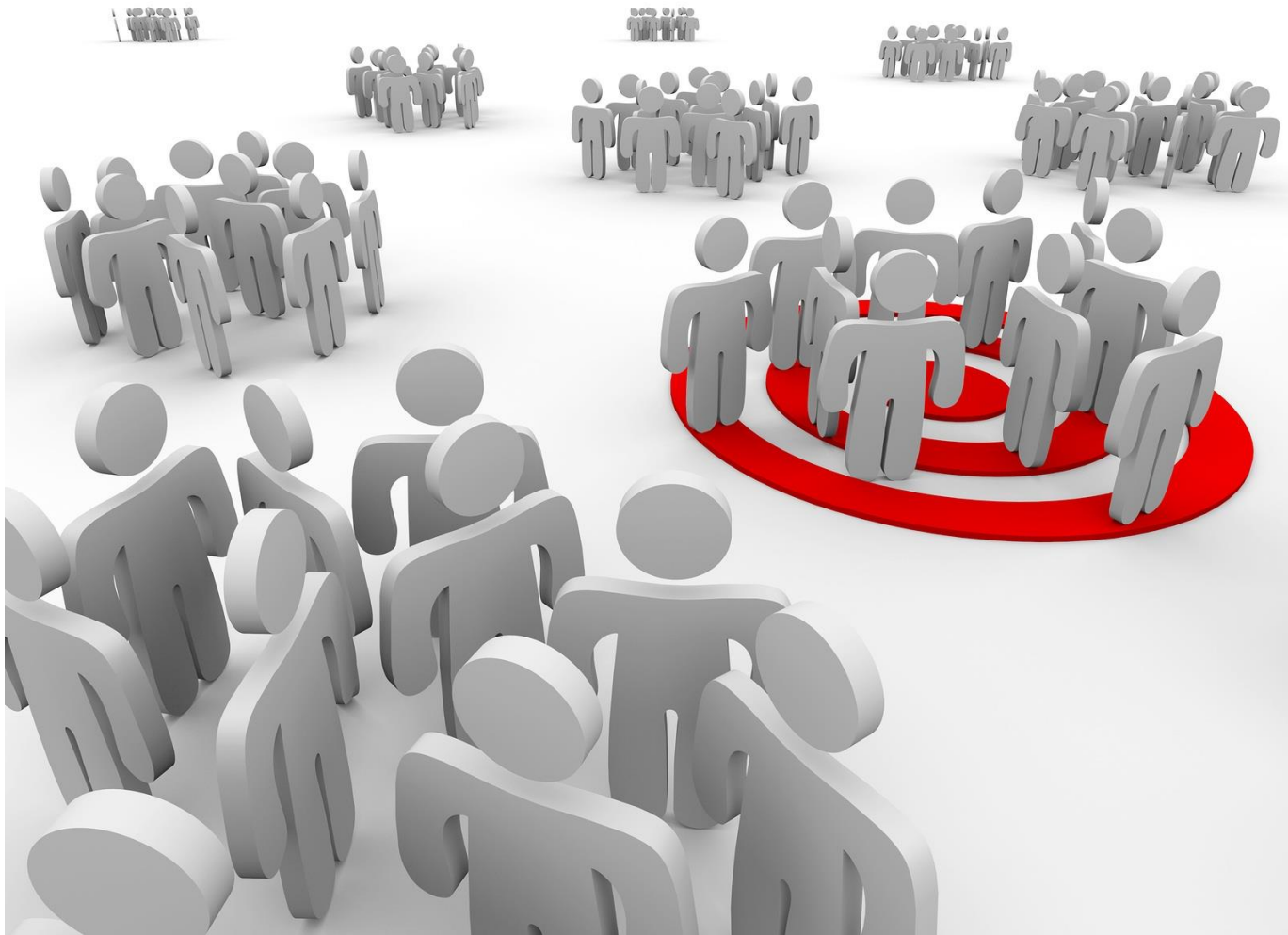
- a)** To identify policy and practice changes/intervention points
- b)** To monitor partnership functions (work groups, committees, etc.) and implementation
- c)** To build commitment with stakeholders
- d)** To set and monitor progress toward attainment goals

How is data considered and incorporated into Partnerships' work?

- 1) To identify policy & practice changes/intervention points**
- 2) To monitor partnership functions (work groups, committees, etc.) and implementation**
- 3) To build commitment with stakeholders**
- 4) To set and monitor progress toward partnership goals**

“We could move the needle [on FAFSA completion]. We wanted something we could track. We had experts who could educate... students and faculty. This is our goal – let’s go attack it.”

Data disaggregation can help focus partnership efforts



User-friendly data is key to prompting action

“[The backbone] makes our work better. They create materials that can be used by all of us, but that none of us could produce on our own.”

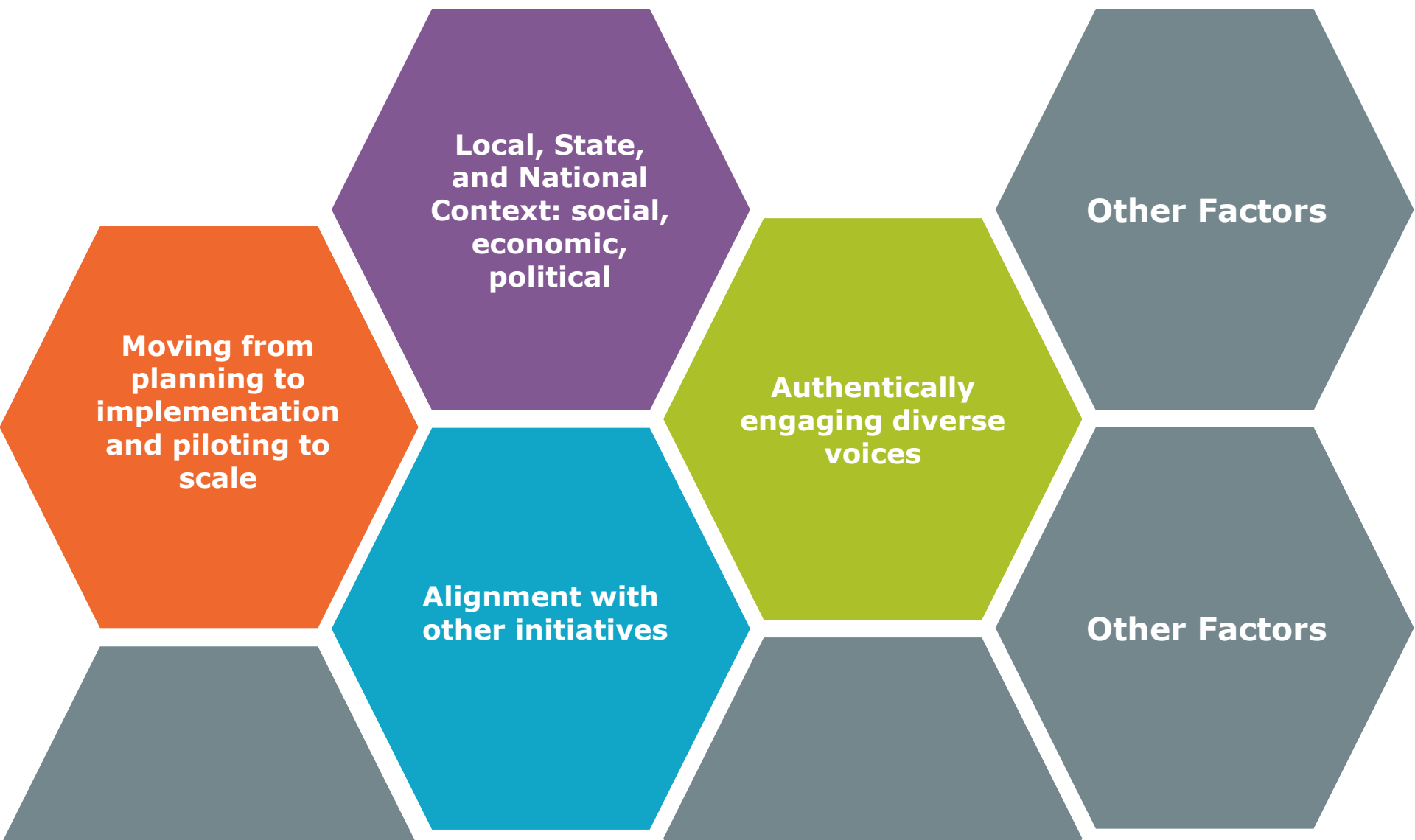




Factors influencing site progress

Which of some factors which are influencing your work?

Factors





EQUAL
MEASURE

FINDING
PROMISE

FUELING
CHANGE